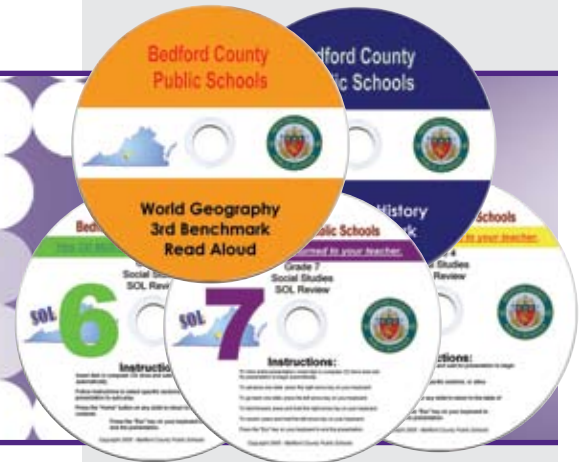


# Rimage Helps Students Hit the Books in Bedford County, Virginia



The Bedford County (Virginia) Public School system serves a far-reaching suburban and ex-urban area between Roanoke and Lynchburg. More than 11,000 students attend 15 elementary schools, three middle schools and three high schools in the Bedford County district.

Like most public school systems in the United States, Bedford County is obliged to meet or exceed Virginia's state-mandated Standards of Learning (SOLs) to maintain accreditation and funding. In order to help teachers prepare students for skills assessments, the school district decided to provide study aids – such as PowerPoint presentations and on-demand video instruction – on CDs and DVDs to every student.

## THE CHALLENGE

Prior to implementing its Rimage solution, Bedford County Schools relied on individual teachers to create study materials, such as worksheets and quizzes.

Teachers wanted a way to share their materials, and find a way to distribute more dynamic and engaging study aids. Furthermore, the district had a goal to improve test scores by providing better and more consistent study and test preparation materials.

"There was a great deal of duplication of efforts and nothing system-wide in place," said Victor Gosnell, director of technology and media for Bedford County Public Schools. "Many hours were spent producing inconsistent materials, and teachers were working too hard to ensure kids had the tools they

needed to study at home. Now teachers take pride in developing top notch tools that are shared with the entire district."

Study materials include: Flash cards, world geography, Virginia and US history, algebra readiness, nutrition study guides, interactive note taking workshop and curriculum maps to help teachers pace their instruction.

## THE SOLUTION

The Bedford County School district decided to meet their goals by centralizing the distribution of study aids and putting them on CDs and DVDs. Therefore they needed a way to produce thousands of CDs and DVDs each school year.

***"Our next step is to look at expanding our study aid offerings to include interactive DVDs, which can be produced using our current Rimage system. Not all kids have PCs at home, but nearly all of them have some form of DVD playback device."***

Victor Gosnell,  
Director of Technology and Media,  
Bedford County Public Schools

## CUSTOMER

Bedford County Public Schools

## CHALLENGE

Streamline educational materials

## SOLUTION

Rimage Disc Publishing System



R I M A G E™

ON-DEMAND DIGITAL PUBLISHING™

***“With my old CD duplicator, I could only do 50 discs at a time and the robotic mechanism jammed frequently. Also, the label quality wasn’t up to par. I searched on the Internet for the best disc publishing solution and found Rimage – I bought the unit and I’ve never been sorry.”***

Victor Gosnell,  
Director of Technology  
and Media,  
Bedford County Public  
Schools

## **THE CUSTOMER**

Bedford County Public Schools  
[www.bedford.k12.va.us](http://www.bedford.k12.va.us)

## **RIMAGE SOLUTION**

Bedford County Public Schools uses a single Rimage disc publishing system with an integrated Everest™ full color, permanent, thermal retransfer direct-to-disc printer. The district also purchased a service contract from Rimage and uses Rimage Media Kits™ to supply archival-quality discs and long-lasting ribbons for its digital publishing system.

Rimage Corporation  
7725 Washington Avenue South  
Minneapolis, MN 55439 USA  
phone: 952.944.8144  
fax: 952.944.7808  
web: [www.rimage.com](http://www.rimage.com)  
© Rimage Corporation 2007 All rights reserved.  
CS-0007-07-A

After rigorous Internet research, Bedford County Public Schools purchased a Rimage system and began producing interactive take-home study CDs for every student in grades 3-5.

The district keeps digital masters of all the discs so they can make new copies or update materials on-demand. By centralizing the distribution of study materials, content can be updated easily as textbooks and supplemental instructional materials change, or as teachers create new tools that can be shared.

The district realized immediate rewards from using its Rimage system. SOL scores have steadily increased during the past three years, success that Gosnell attributes to the district “providing more resources for teachers and students.” In addition, Bedford County Public Schools have saved “significant dollars” over what the district might have paid a third party to produce its resources on disc. The district also has benefited from increased efficiency, using the Rimage system for immediate turnaround on critical projects.

Today, Bedford County Public Schools, produces more than 4,000 customized discs each year using its Rimage system. The district creates custom CDs for early education, school readiness and other education topics. Parents and students both benefit from the district’s ability to produce informational material on disc – everything from kindergarten graduation videos to interactive source material for gifted and talented students passes through the Rimage system.

“We bought the Rimage system in order to “grow into” it and we have. It’s the perfect solution for our needs,” said Gosnell, who hopes to use the system to begin producing DVDs next year. “The quality of the discs we produce is much better than we could accomplish with a lower-end system and

much more efficient than using a third party vendor. We believe the Rimage system is a very important part of our district’s success in increasing student achievement and exceeding SOL requirements.”

## **Dynamic, Centralized Academic Resources for a Large School District**

As a subscriber to Discovery Education’s streaming content service, which produces thousands of instructional videos for students in grades K-12, Bedford County Public Schools is able to reproduce and distribute all content using its Rimage digital publishing system. The district can take video clips in segments or in entirety and use them as study aids, producing more than 800 error-free copies per grade level per year. With its Rimage solution, Bedford County Public Schools can make the most of its Discovery Education subscription and easily produce study aids for district-wide distribution.

## **A Smart, Hard-Working Investment**

Using the Rimage digital publishing system has resulted in major cost savings for Bedford County Public Schools. The district can now produce a hundred discs in the time it used to take to produce ten, and production can be accomplished in-house without using expensive vendors. Plus, the archival quality of Rimage CDs with permanent thermal retransfer disc printing ensures that discs produced with the Rimage system have greater longevity. The district can use its Rimage-produced CDs year after year without significant replacement expenses. “After three years of using the Rimage equipment, we feel it has been a smart, hard-working investment,” said Gosnell.



R I M A G E™

ON-DEMAND DIGITAL PUBLISHING™